

Nomination Narrative Summary for 45th Annual Preservation Award to Newlin Grist Mill for Restoration and Furnishing of 1739 Trimble Kitchen and Pantry

pieces of soapstone used in a repair that contained antler toolmarks from pre-contact indigenous artisans to drains and hanging equipment from their early 20th century use as an abattoir.

Physical Restoration The physical restoration part of the project entailed removing modern plaster from all the walls, restoring the hearth and chimney, repointing the masonry, replacing window frames and doors, restoring the brick floor in the kitchen reconstructing the stone floor in the pantry and removing the intrusion of necessary 21st Century mechanical elements from the visitor experience. A modern I-beam in the pantry was replaced with a new oak beam hewn from a log in a public demonstration of period tools.

Furnishing: Staff worked with craftspeople and artisans from around the world to furnish the two rooms with usable items of cooperage, ceramics, basketry, pewter, tinware, cast iron, cutlery, and furniture. The project not only preserved an important example of early kitchen architecture but also contributed to the preservation of historic trades and skills. Newlin Grist Mill worked with these artisans to document the various processes.

Value this Project Adds to Interpretation of Delaware County History: The Kitchen and Pantry Project has made educational contributions during the restoration process and now continues contribute into the future. The restoration project was incorporated into public programming as part of the Newlin Grist Mill's Public Archaeology Project. Hewing the replacement beam and fabricating doors were demonstration activities in the Millwright Shop, an ongoing public program focused on promoting historic trades. Material Culture analysis of previously conducted probate analyses added depth to the project and gave real-world experience to Winterthur Summer Institute participants. Since its completion, the Trimble Kitchen and Pantry are being used for demonstrations during school field trips, programs on hearth cooking and food preservation, and demonstrating historic brewing. The kitchen hosted programs by English food historian Marc Meltonville and African American culinary arts expert Jerome Bias.

Principal Project Participants: The core group for this project consisted of Newlin Grist Mill staff and volunteers who, in addition to coordination and oversight, conducted the architectural and archaeological analysis, conducted research of the documentary and physical evidence to ensure the projects accuracy, and completed elements of the restoration like hewing a replacement beam, building doors, and fabricating furnishings. The primary contractor on the project was mason Doug Groff of Victorian Heritage, Inc. Other contributors included Winterthur Summer Institute fellows who conducted material culture studies of the findings of previous probate analysis. (Full disclosure: I have been an active participant in the project and am a trustee of the foundation that owns and operates Newlin Grist Mill including the Trimble House site.)

Conclusion: The Trimble Kitchen and Pantry Restoration Project should be recognized for its contributions to our knowledge of early historic kitchens, documentation and authenticity, and public education of historic foodways, historic trades, and the restoration process itself. Thank you for the Commission's efforts to encourage and support the preservation of Delaware County's rich history and thank you for considering Newlin Grist Mill's project to Restore and Furnish Trimble House Kitchen and Pantry for a Preservation Award.



Photographs in Support of Trimble Kitchen and Pantry Nomination

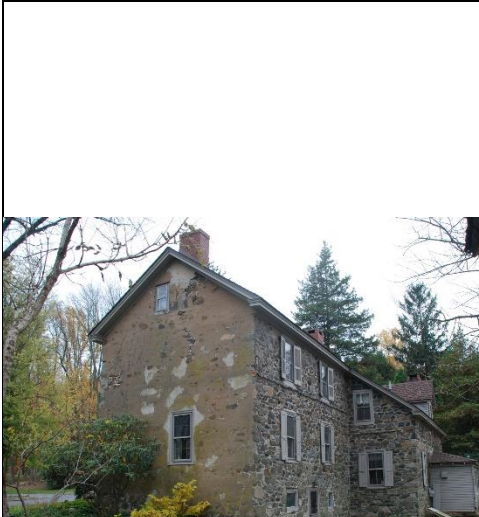


Fig 1. Original 1739 Trimble House w Kitchen Door

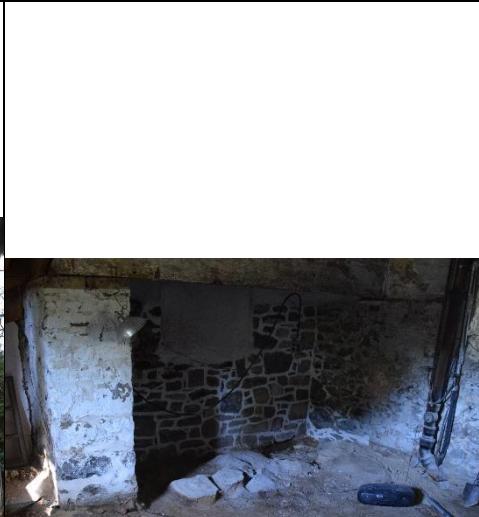


Fig 2. Unrestited Hearth and floor

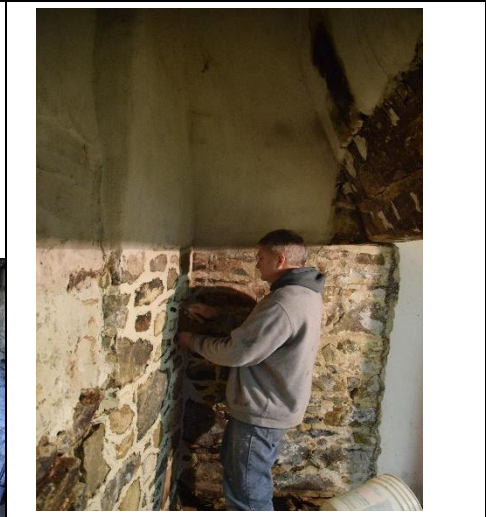


Fig 3. Mason at work Inside Hearth (Shadow is from mantel behind him.)



Fig.4. Hearth and Kitchen Floor Restored

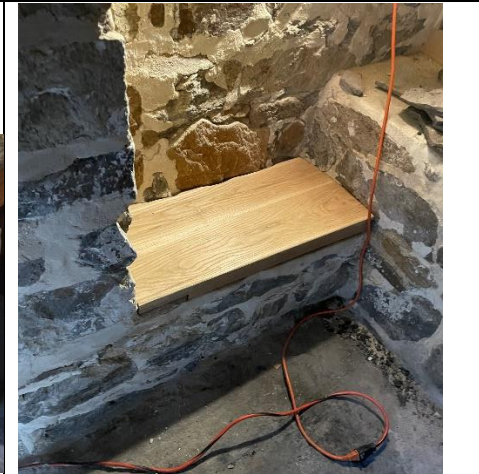


Fig. 5. Hearth Seat



Fig. 6 NGM Blacksmiths Forging Lug Pole

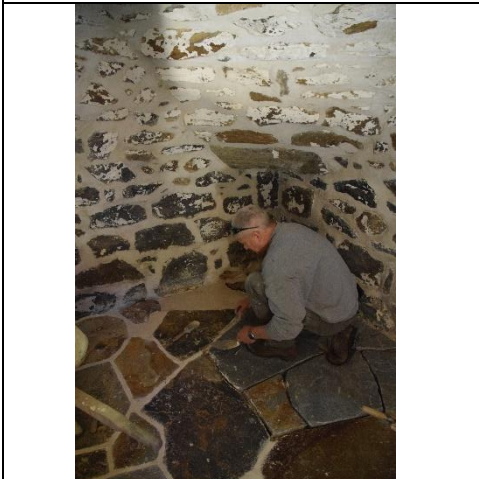


Fig 7. Mason Completing SE Corner of Pantry Floor



Fig 8. Show Three Steps To Hew a Beam



Fig 9. Hewing the Last Side

Nomination Narrative Summary for 45th Annual Preservation Award to Newlin Grist Mill for Restoration and Furnishing of 1739 Trimble Kitchen and Pantry



Fig 10. New Beam, Door Frame and Floor



Fig 11. Inside Faux Post to Conceal 21st C. Mechanicals



Fig 12. Installing Faux on Wall



Fig 13. Pantry Feet Scribed to Fit Bedrock Outcropping



Fig 14. Collected Cooperage



Fig 15. Collected Pewter



Fig 16. Pantry Cabinet In Use



Fig 17. Making Leaded Windows



Fig 18. Foodways Demonstration

Nomination Narrative Summary for 45th Annual Preservation Award to Newlin Grist Mill for Restoration and Furnishing of 1739 Trimble Kitchen and Pantry



Fig 19. The Restored and Equipped Trimble Kitchen Brings 21st Century Visitors Into An 18th Century Experience