

Steps toward Walkability

Delaware County Sidewalk Inventory



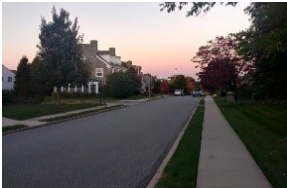
Why Sidewalks Matter

Sidewalks, along with other pedestrian and bicycle facilities, help to create Complete Streets that accommodate *all* roadway users, regardless of physical ability or demographics. *Steps toward Walkability: Delaware County Sidewalk Inventory* supports the implementation of Complete Streets throughout the County.

Sidewalks improve walkability, making travel as a pedestrian safer and more convenient. In this way, sidewalks enhance mobility and accessibility, and facilitate economic activity. Sidewalks also offer an opportunity for physical activity, which has many health benefits. Furthermore, walking, instead of driving, short distances can reduce emissions and improve air quality.

Creating a Sidewalk Inventory

In order to analyze walkability, one needs to know where sidewalks do and do not exist. Historically, sidewalk data has been non-existent or difficult to access in Delaware County. To fill this crucial data gap, the Delaware County Planning Department (DCPD) mapped sidewalks countywide with a geographic information system (GIS), categorizing sidewalks using the classifications shown below. Gaps in sidewalk networks can be easily identified in sidewalk maps.

Missing Sidewalk	Sidewalk without Vegetated Buffer	Sidewalk with Vegetated Buffer
		
No sidewalk along roadway.	Sidewalk present but no buffer between sidewalk and roadway.	Sidewalk present with vegetated buffer (grass strip, trees, etc.).



Analyzing Case Studies

Steps toward Walkability includes transportation network analysis of 18 case study locations. The analysis focuses primarily on pedestrian facilities but touches on many other factors, including bicycle facilities. The map on the left shows the sidewalk network of one case study location, Boothwyn Town Center.

Map Legend

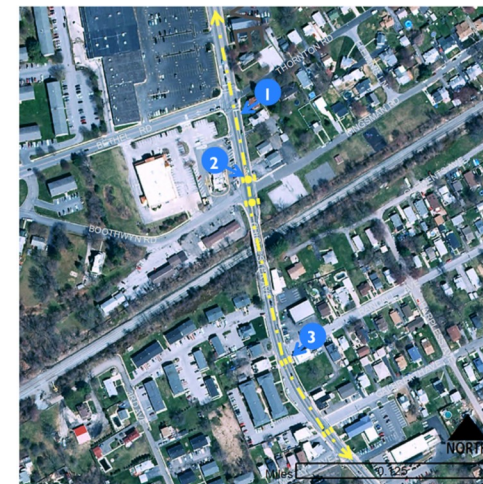
- Sidewalk with Vegetated Buffer
- Sidewalk without Vegetated Buffer
- Missing Sidewalk

Recommending Improvements

Building on case study analysis, the report offers recommendations for pedestrian and bicycle improvements. The map on the right displays numbered recommendations to improve Boothwyn's transportation network, which are covered in more detail in the report.

Map Legend

- 1 Install bicycle facilities.
- 2 Install pedestrian refuge islands.
- 3 Install marked crosswalks.



Analyzing Your Network and Funding Improvements

Steps toward Walkability's case studies can serve as a guide for undertaking your own walkability analysis. The report includes descriptions of several statewide, regional, and local funding sources that can be utilized to plan or implement improvements. DCPD can also help through pedestrian and bicycle plans, municipal plan and zoning code updates, targeted walkability studies, and grant application assistance.