

The Darby Creek Watershed Resilience, Conservation and Management Plan

...and how you can help!



Natural
Lands

The Darby Creek Watershed



FLOW FACTS:

Area: 78 square Miles (50K acres +/-)

123 Linear Miles of Stream

Population within Watershed:
Approximately 500,000 people

31 Municipalities

Time to Update

DARBY CREEK WATERSHED CONSERVATION PLAN

EXECUTIVE SUMMARY



DARBY CREEK VALLEY ASSOCIATION

©2005

Issues: Regional Flooding

Coastal Flood Advisory

Coastal Flood Advisory
Southeastern PA
Posted 2 hours ago

Send to phone Share

Recommended actions

If travel is required, allow extra time as some roads may be closed. Do not drive around barricades or through water of unknown depth. Take the necessary actions to protect flood-prone property.

Source: [National Weather Service](#)

Info & updates

...COASTAL FLOOD ADVISORY REMAINS IN EFFECT FROM 7 AM TO 3 PM EST SATURDAY...

*** WHAT...**Up to one foot of inundation above ground level expected in low-lying areas near shorelines and tidal waterways.

*** WHERE...**In Delaware, New Castle. In New Jersey, Mercer, Salem, Gloucester, Camden and Northwestern Burlington. In Pennsylvania, Delaware, Philadelphia and Lower Bucks.

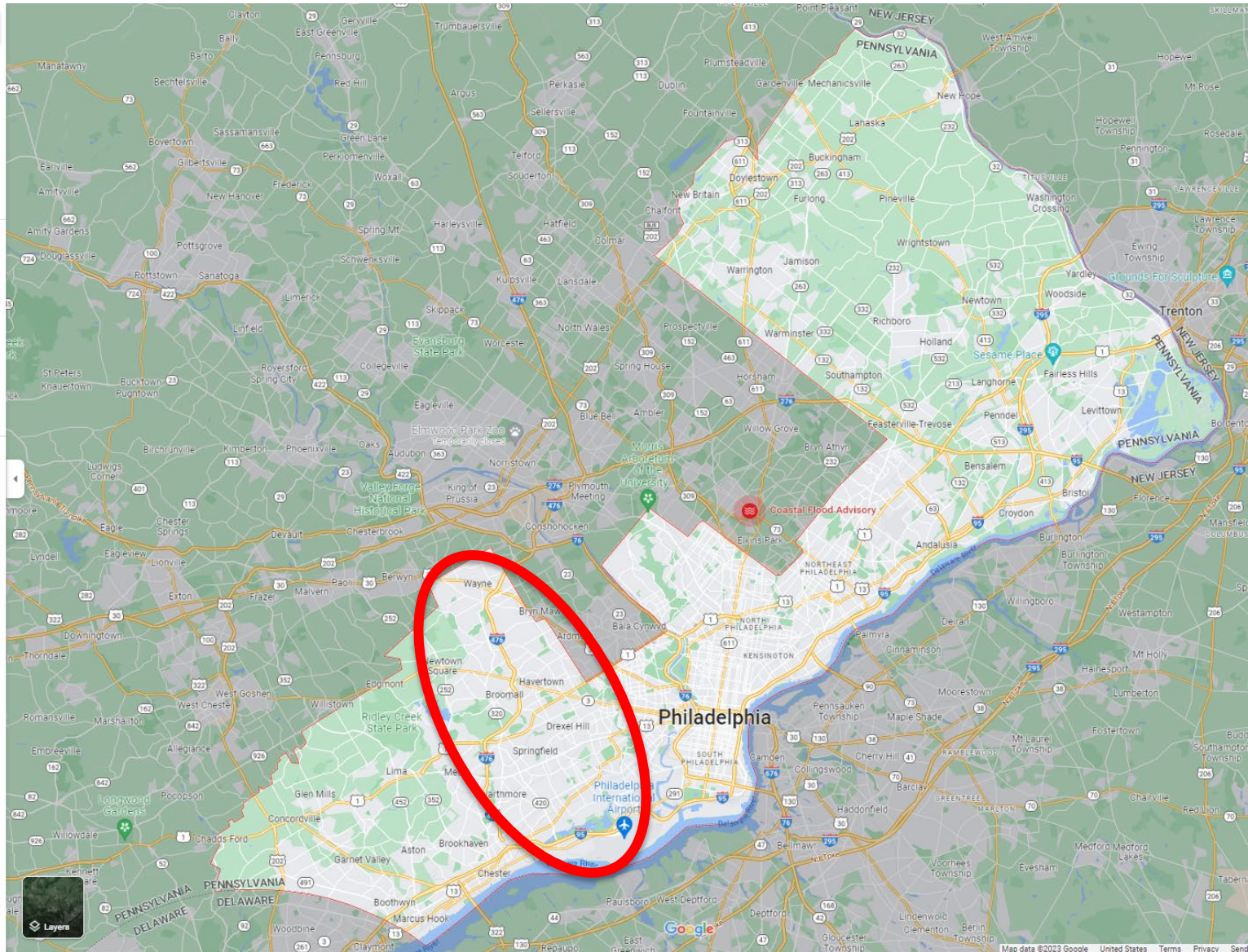
*** WHEN...**From 7 AM to 3 PM EST Saturday.

*** IMPACTS...**At this level, flooding begins on the most vulnerable roads along tidal waterways. Some partial or full road closures are possible. Time of high total tides are approximate to the nearest hour.

Delaware River at Reedy Point
MLLW Categories - Minor 7.2 ft, Moderate 8.2 ft, Major 9.2 ft

MHHW Categories - Minor 1.4 ft, Moderate 2.4 ft, Major 3.4 ft

Total Total Departure
Day/Time Tide Tide from Norm Flood
ft MLLW ft MHHW ft Impact



Issues: Local Flooding



(Credit: CBS3)

Causes: Climate Change

Pennsylvania Department of Conservation and Natural Resources



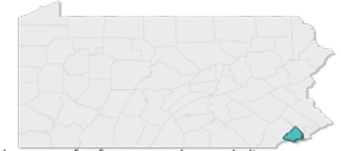
Climate Change Adaptation and Mitigation Plan

June 2018

Community Climate Outlook **DELAWARE COUNTY, PA**

Delaware County residents will face increasingly severe weather- and climate-related hazards, such as **heat waves, flooding, and storm surge.**

As the frequency and intensity of local hazards change, it is important for all of us to protect communities and local habitats. Using the best available evidence, scientists can project how climate (long-term averages in daily weather) will change in the future, and the effects this will have on local communities.



Climate information can guide decision-making to help us plan and prepare for future weather and climate hazards. It is important that action includes areas with limited resources and people at higher risk. With justice-minded planning and preparation, Delaware County can build a resilient community for all residents and future generations.

SEA LEVEL RISE



THE CITY OF PHILADELPHIA
OFFICE OF
SUSTAINABILITY

PHILADELPHIA CLIMATE ACTION PLAYBOOK

JANUARY 2021

Causes: Too Much Paving



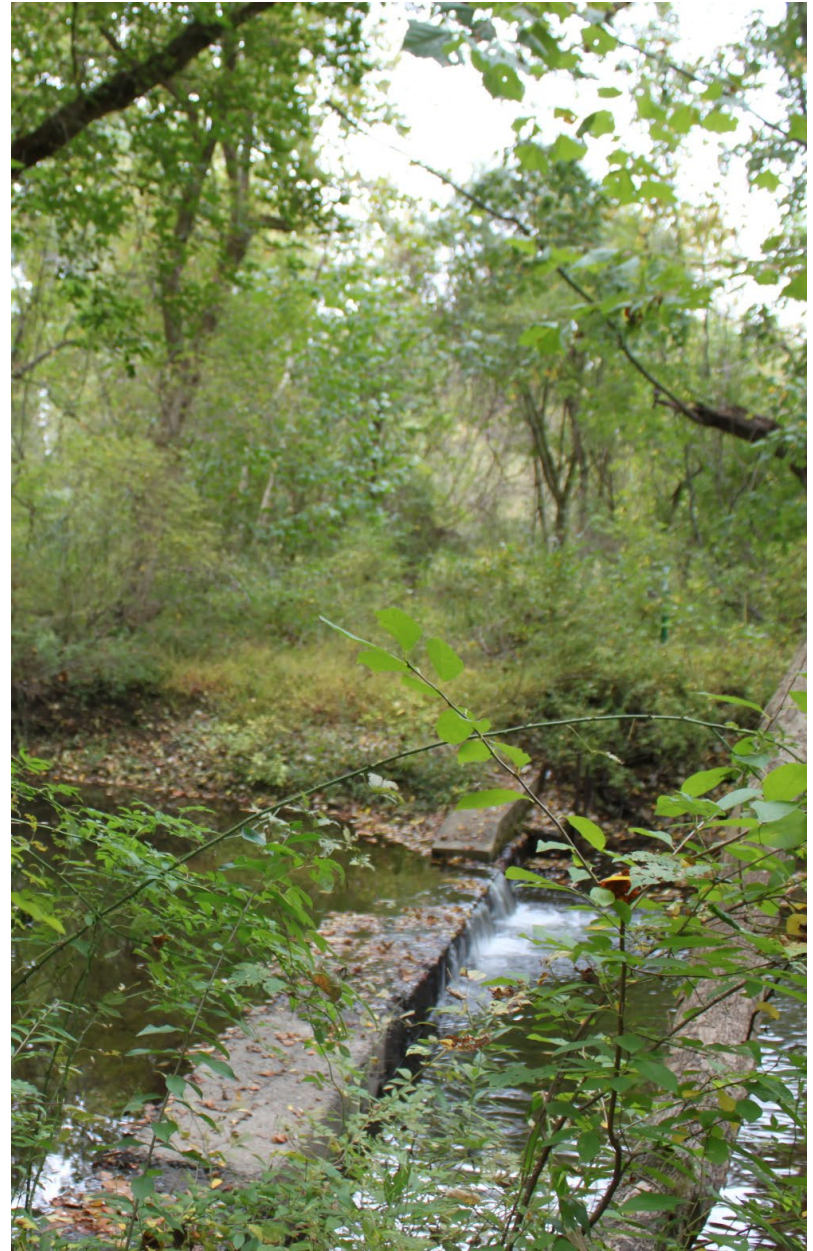
Causes: Too Much Lawn



Causes: Outdated Stormwater Management



Causes: Outdated Infrastructure



Causes: Weak Ordinances, Poor Enforcement

PRINCIPLE 1: ZONING and SUBDIVISION REGULATIONS ORIENTED TOWARDS PROTECTION OF NATURAL RESOURCES

Techniques/Evaluate	HIGH	MEDIUM	LOW
<p>Underlying or “base” zoning is appropriate for the community and encourages groundwater infiltration and protection of natural resources.</p> <ul style="list-style-type: none"> • Zoning and SALDO regulations have been adopted? • Consistent w/municipal or county conservation policies? • At “build out” does zoning protect natural resources? 	<p>Zoning 4.0: All districts allow 1 & 2 family dwellings on 15% slope or less only. Some districts permit ag, forestry, institutional, or craft shop uses as appropriate. All else is special uses.</p> <p>Min Lot are = 5 ac (SR), 3 ac (RR, R1, R2), 20K sf (RB, DB), 15K sf (GR).</p> <p>Rural districts have 300 ft. min river or road frontage.</p> <p>Max lot clearing = 20% (SR, RR, R1, R2), 15% (GR), 50% (RB, GB).</p> <p>Max lot coverage = 10% (SR,</p>	<p>SR - Scenic River RR - Recreational River R1 - Rural Residential R2 - Rural Development GR - General Residential RB - Roadside Business DB - Downtown Business</p> <p>Zoning 6.5: Floodplain overlay – 100 yr flood zones. Non-obstructive uses permitted. No buildings unless flood-proofed.</p> <p>Zoning 6.17: River Mgmt Corridor. Apply in SR & RR. Ridgeline regs apply if visible from Delaware or w/in 100 ft. of ridgeline. 100 ft. setback from Delaware for structures and septic. Other conditions</p>	

Another Result: Environmental Injustice

EPA EJScreen EPA's Environmental Justice Screening and Mapping Tool (Version 2.1)

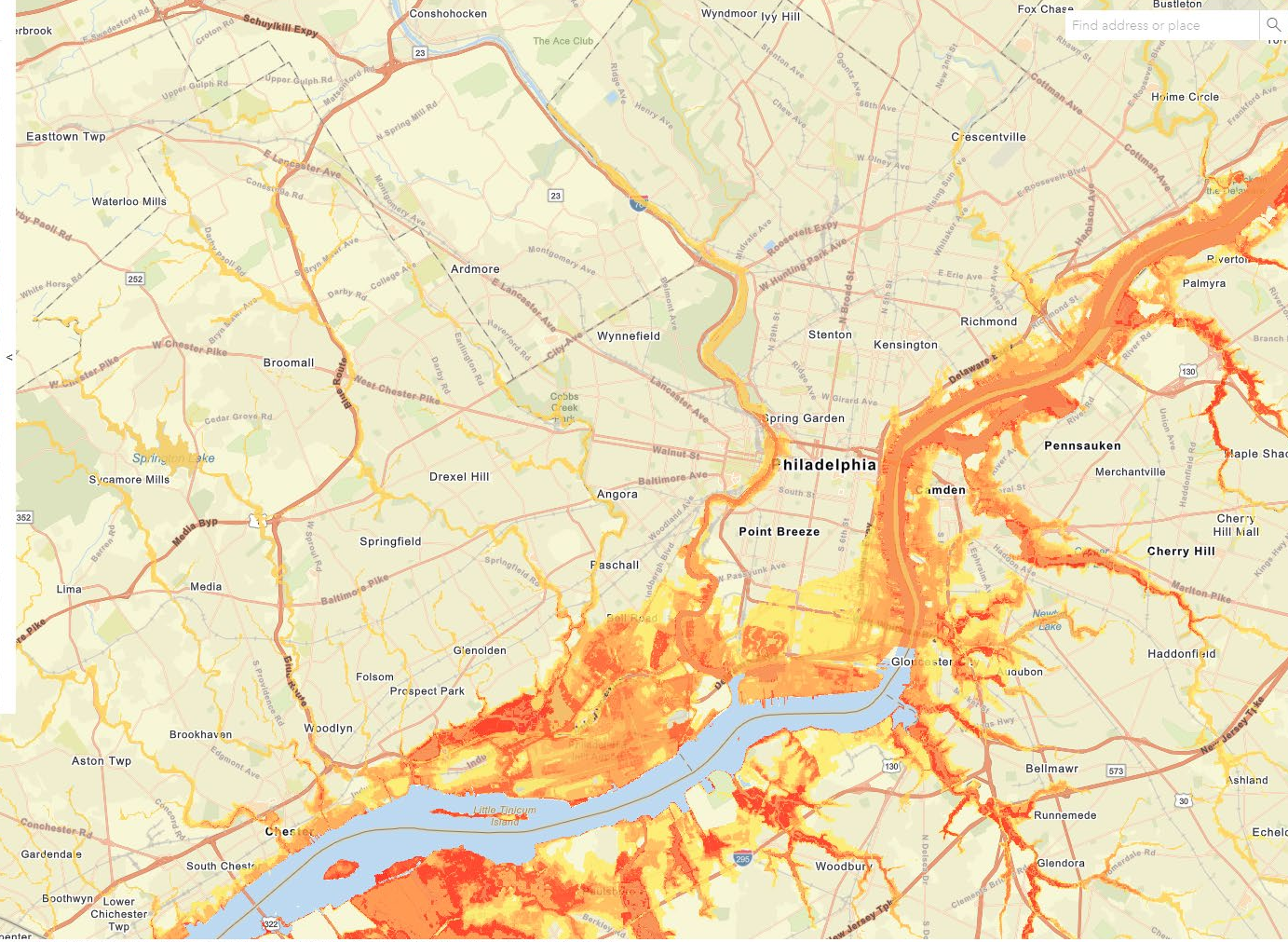
[EJScreen Website](#) | [Mobile](#) | [Glossary](#) | [Help](#)

Please note: Territory data (except Puerto Rico) is not available as comparable to the US. It is only comparable to the territory itself by using the 'Compare to State' functionality. Likewise, some of the indicators may not be available for territories.

Map navigation icons: Home, Location, Print, Full Screen

Compare to US Compare to State

- Environmental Justice Indexes
- Supplemental Indexes
- Pollution and Sources
- Socioeconomic Indicators
- Health Disparities
- Climate Change Data
 - Drought
 - Coastal Flood Hazard
 - 100 Year Floodplain
 - Sea Level Rise (NOAA)
 - 1ft Sea Level Rise
 - 2ft Sea Level Rise
 - 3ft Sea Level Rise
 - 4ft Sea Level Rise
 - 5ft Sea Level Rise
 - 6ft Sea Level Rise
 - Wildfire Risk
 - Flood Risk
- Critical Service Gaps
- Additional Demographics
- Threshold Map



Map Contents

- Socioeconomic Indicators
- Coastal Flood Hazard
- Coastal Flood Hazard Composite (# of Hazards)
 - AL_FloodComposite
 - 11
 - 10
 - 9
 - 8
 - 7
 - 6
 - 5
 - 4
 - 3
 - 2
 - 1
 - AS_FloodComposite
 - 11
 - 10
 - 9
 - 8
 - 7
 - 6
 - 5
 - 4
 - 3
 - 2
 - 1
 - CA_FloodComposite
 - 11
 - 10
 - 9
 - 8
 - 7
 - 6
 - 5
 - 4
 - 3
 - 2
 - 1
 - CT_FloodComposite
 - 11
 - 10
 - 9
 - 8
 - 7
 - 6
 - 5
 - 4

The Funders

GREEN WAYS

DELCO
GREEN SPACE
AND TRAILS
PROJECT

DCVA
DARBY CREEK VALLEY ASSOCIATION



pennsylvania
DEPARTMENT OF CONSERVATION
AND NATURAL RESOURCES



THE
FOUNDATION FOR
DELAWARE
COUNTY

WILLIAM PENN
FOUNDATION

The Sponsors & Supporters



Municipalities

Darby Township
Haverford Township
Lansdowne Borough
Newtown Township
Norwood Borough
Radnor Township
Springfield Township
Tinicum Township
Upper Darby Township

Partner Organizations

Eastern Delaware County Stormwater Collaborative
Eastwick Friends & Neighbors Coalition
John Heinz National Wildlife Refuge at Tinicum

The Task Force

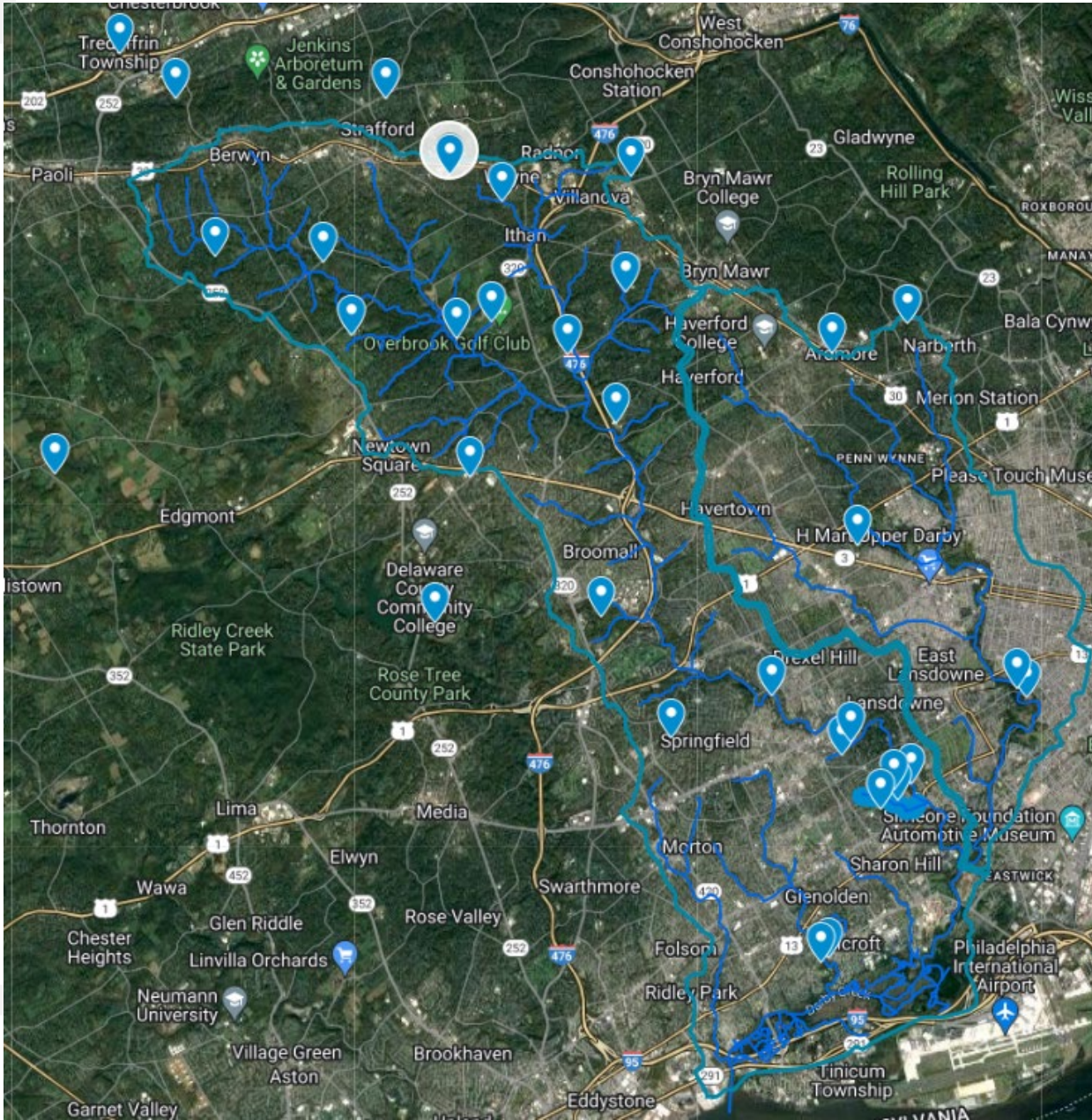


Aurora Dizel
Ashley Dolcemore
Maria Gazzillo
Bonnie Hallam
Dale Harris
Jesse Hart
Roy Hunter
Jon Leshner
William Lighter
Robin Mann
Ruth Mooney
Brian Razzi
Jaclyn Rhoads
Temwa Wright
Rebecca Yurkovich
Faith Zerbe

Review: Map of Important Places

Add layer + Share Preview

- DCVA's Folcroft Property
- Delcora
- Town of Norwood Compost ...
- Point 5
- Point 6
- Point 3
- Point 4
- john bartrams park in darby
- McCall Golf Club
- Headwaters - Indian Creek
- Megan works here
- Gillespie Park, Upper Darby
- Mt Zion Memorial Cemetery
- Eden Cemetery
- Pusey Run
- Thompson Tract, Aldan Boro...
- Don Guanella Site - Marple, D...
- Radnor Township
- Tredyffrin Township
- Lower Merion Township
- Easttown Township
- Collingdale Park
- Willistown Conservation Trust
- Hillside Elementary School
- Tredyffrin Public Library
- Stoneleigh: a natural garden
- Waterloo Mills Preserve
- Springfield Township -BMP P...
- Haverford Community Recre...
- Radnor Middle School**
- Marple Newtown School Dist...
- Whitby Meadow 1
- Whitby Meadow 2



Good Examples:

Radnor Middle Sch.

Gillespie Park

Issues:

Dumping at
Collingdale Park

Direct stormwater
flow at Aldan Swim

Opportunities:

Golf Courses
Cemeteries
Parks
Open Spaces

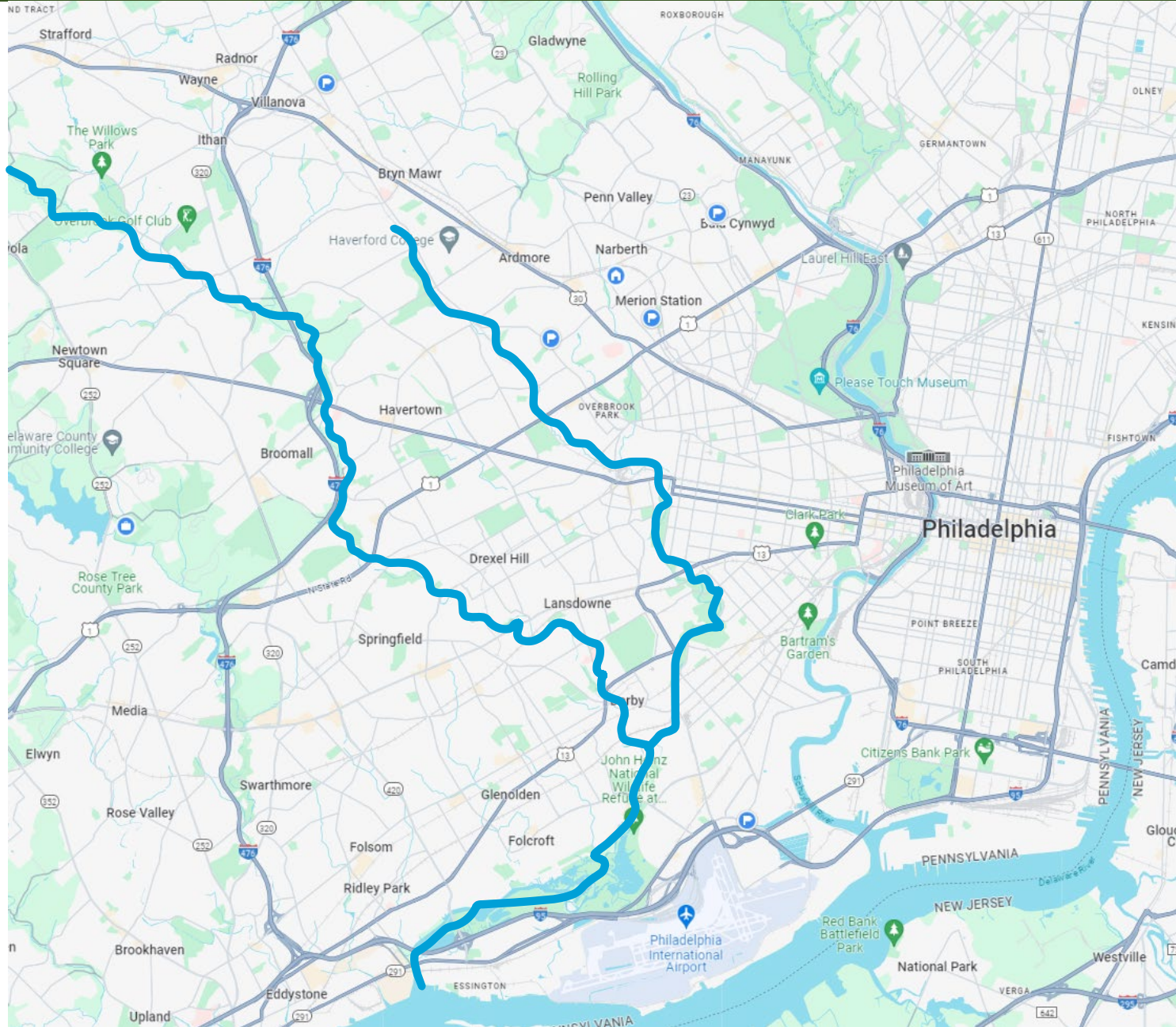
PRELIMINARY Goals

DARBY CREEK WATERSHED CONSERVATION PLAN EXECUTIVE SUMMARY

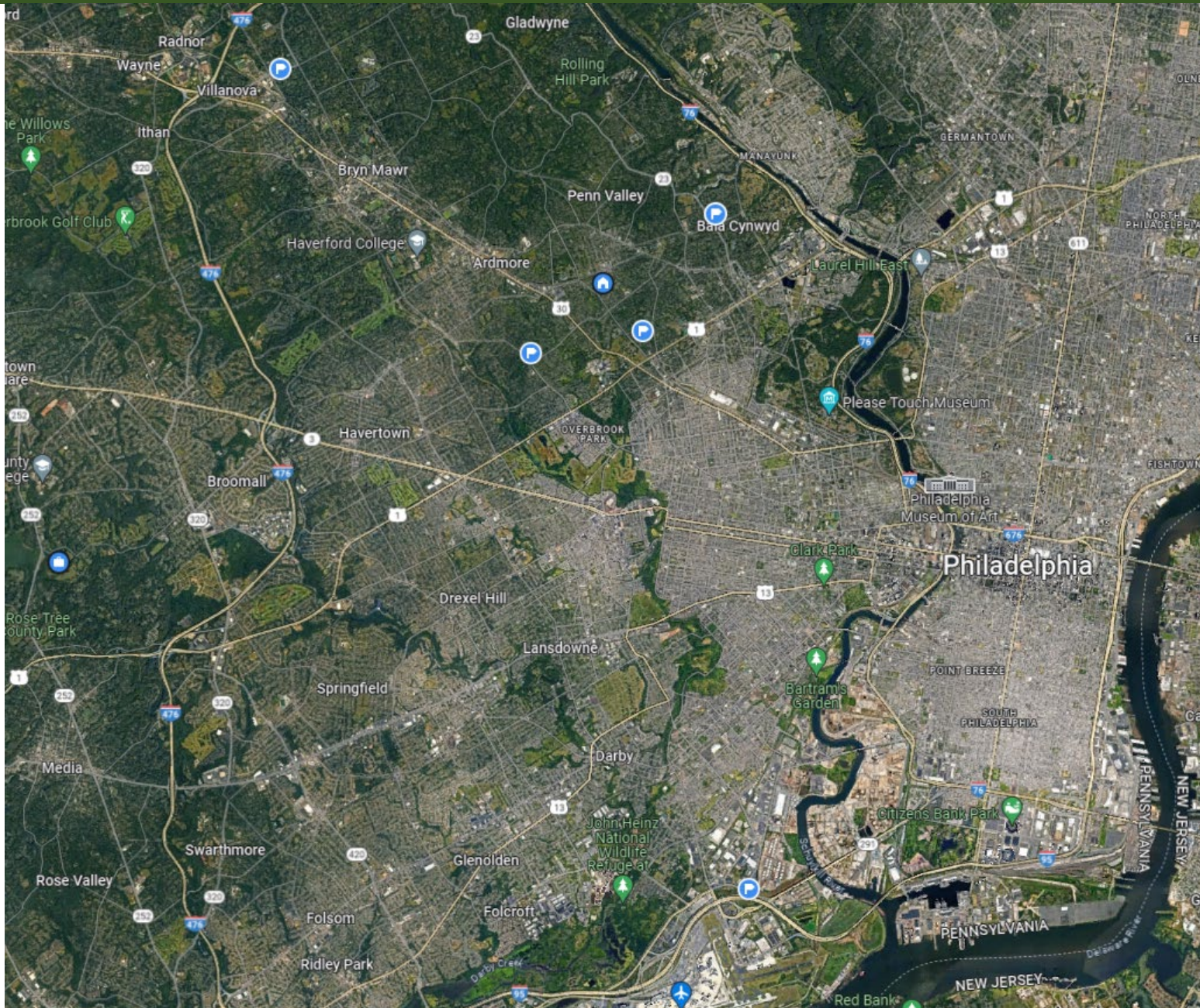


1. Establish a Darby Creek Watershed greenway
2. Monitor Stormwater Plans
3. Identify Parcels for Conservation
4. Promote Efforts to Establish, Improve and Enforce Existing Land Use and Development Ordinances
5. Promote Equity and Environmental Justice across the Watershed
6. Prepare for the increased effects of climate change, with a focus on flooding

1. Establish Greenways



1. Establish Greenways



2. Monitor Stormwater Plans



ELECTED OFFICIALS COURTS A TO Z PUBLIC ACCESS

Stormwater Management

Home / Departments / Planning Department / Municipal Programs & Initiatives / Stormwater Management

Delaware County Planning can provide information and technical support to municipalities for compliance with stormwater regulations.

Managing stormwater and protecting water quality in our streams is of critical importance to Delaware County and its residents. The Planning Department works with municipalities to help them implement state and federal programs aimed at mitigating stormwater and pollutant impacts on water quality.

ACT 167 STORMWATER PLANNING

Background







- DEP is directed under Act 167 to develop a **model stormwater ordinance**.
- **Existing MS4s** must update existing ordinances to be consistent with the model ordinance by **September 30, 2022**.
- **New MS4s** must adopt an ordinance consistent with the model ordinance **by September 30, 2022** or with 4th Annual MS4 Status Report.
- The Model Stormwater Management Ordinance satisfies **DEP's Act 167** requirements, and, for **MS4s**, regulatory requirements as implemented through **NPDES permits**.
- MS4s should consider requirements unique to specific county-wide or watershed-wide **Act 167 Plans**.

3. Identify Parcels for Conservation



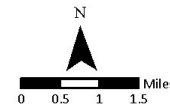
**Darby/Cobbs Creek Watershed -
Parcels > 25 acres**
Delaware, Chester, Montgomery, and
Philadelphia Counties

-  Watershed Boundaries
-  Parcels >= 25 acres
-  Parcel Boundaries
-  Existing Protected Lands


1031 Palmers Mill Road, Media, PA 19063
610-333-5087 | naturalands.org

1. Waterways and watersheds from DEP
 2. Municipal and county boundaries from PA MAP, DCNR
- Compiled By: MEB 11/14/2022

Disclaimer: This map is not a survey. The information imparted with this map is meant to assist Natural Lands Trust, Inc. (DBA Natural Lands), describe the placement of certain retained, reserved, or excluded rights and to calculate acreage figures. Property boundaries, while approximate, were established using the best available information, which may have included: surveys, tax maps, field mapping using G.P.S., and/or orthophotos. Natural Lands makes no representation as to the accuracy of said property lines (or any other lines), and no liability is assumed by reason of reliance hereon. Use of this map for other than its intended purpose requires the written consent of Natural Lands.



3. Identify Parcels for Conservation

Some quick observations...

Not many very large parcels...only ninety-one over 25 acres...and most are golf, cemetery, or developed – some institutions.

A lot of golf courses, but less land than we might think:

Watershed total: 49,000 acres.
Golf course: 1,000 acres or roughly 2% of watershed

A lot of cemeteries, but less land than we might think:

Watershed total: 49,000 acres.
Cemeteries: 1,126 acres or roughly 2% of watershed

Many small parcels will need to make a difference!



4. Ordinances



What are we trying to:

- Gain an understanding of the regulatory tools communities are currently using
- Figure out what's working or not working and WHY
- Identify where the watershed may be unprepared for current or future development trends
- Understand communities' ordinances in the context of their community character

4. Ordinances



4. Ordinances



4. Ordinances

What can we do?

Detailed Ordinance Assessments

Land Use Regulation Updates

Zoning

Subdivision & Land Development

Plant Lists & Landscaping



5. Promote Equity and Environmental Justice

Underserved Communities Eligible for Additionally Funded Projects

Detailed Ordinance Assessments

Land Use Regulation Updates

Park Assessments

Park Master Plans

Pilot Communities



5. Promote Equity and Environmental Justice



5. Promote Equity and Environmental Justice

What can we do?

Park Assessments

Mini Master Plans- Conceptual Plans to help get you started

Plantings

- Riparian buffers
- Reforestation
- Rain Gardens
- Stormwater Swales
- Meadows
- All plantings help manage water!

Modern Recreation Facilities

- Playgrounds
- Pavilions
- Trails
- Sports Courts & Fields



Parks & Planning

Some quick observations...

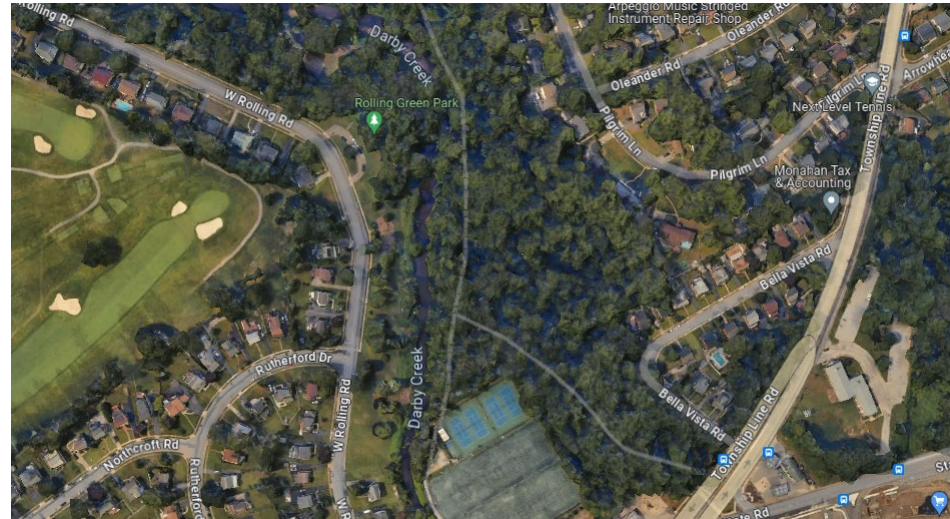
Many parks could be updated to improve recreation, meet modern standards and protect or enhance water quality and infiltration.

A lot of parks...

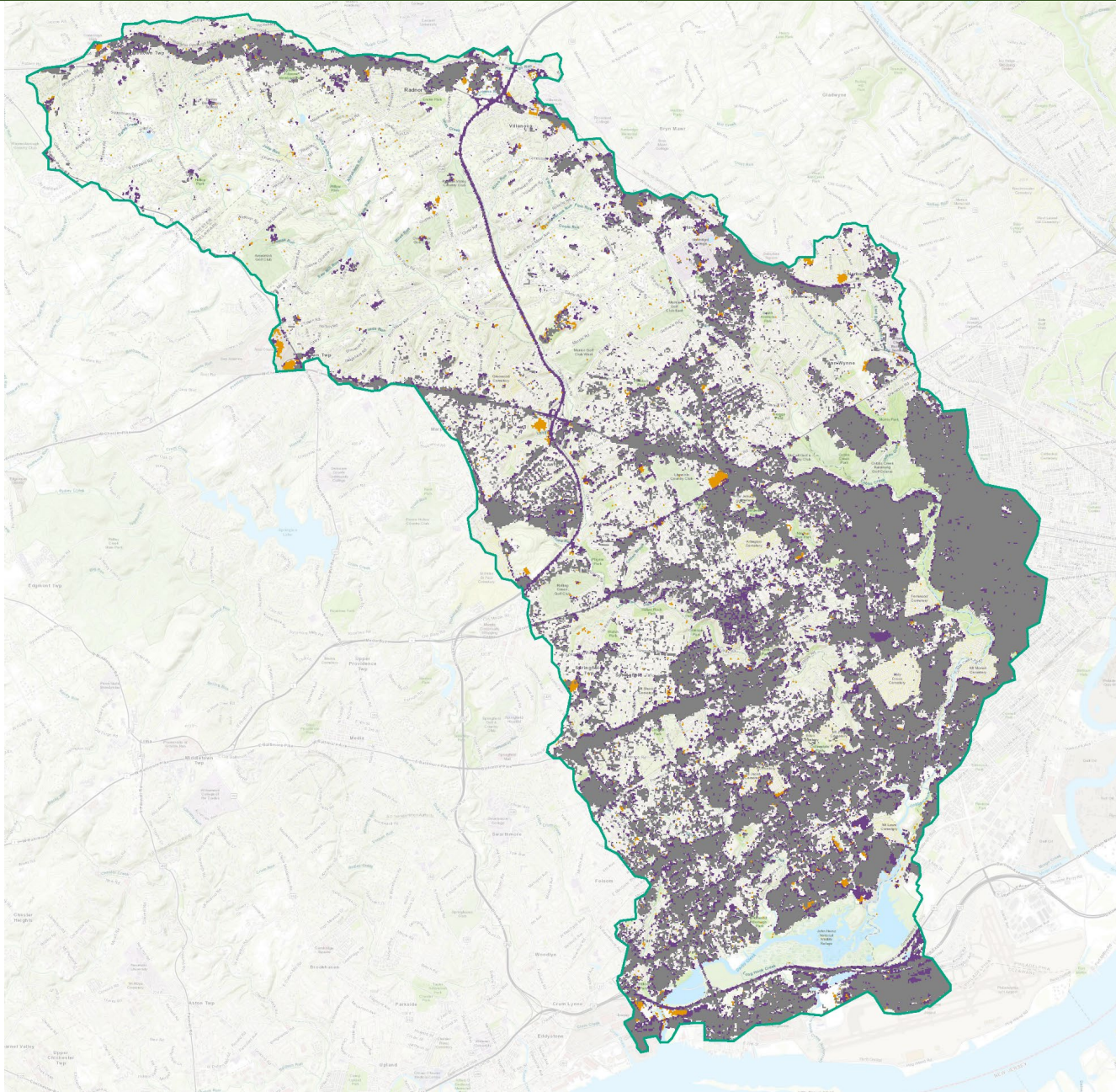
- 175 +/- parks in Darby Creek Watershed within Delaware County
- 2,000 ac +/-
- Watershed total: 49,000 acres.

Parks make up roughly 4% of watershed.

Many small parcels will need to make a difference!



6. Prepare for Climate Change



 Darby Creek Watershed

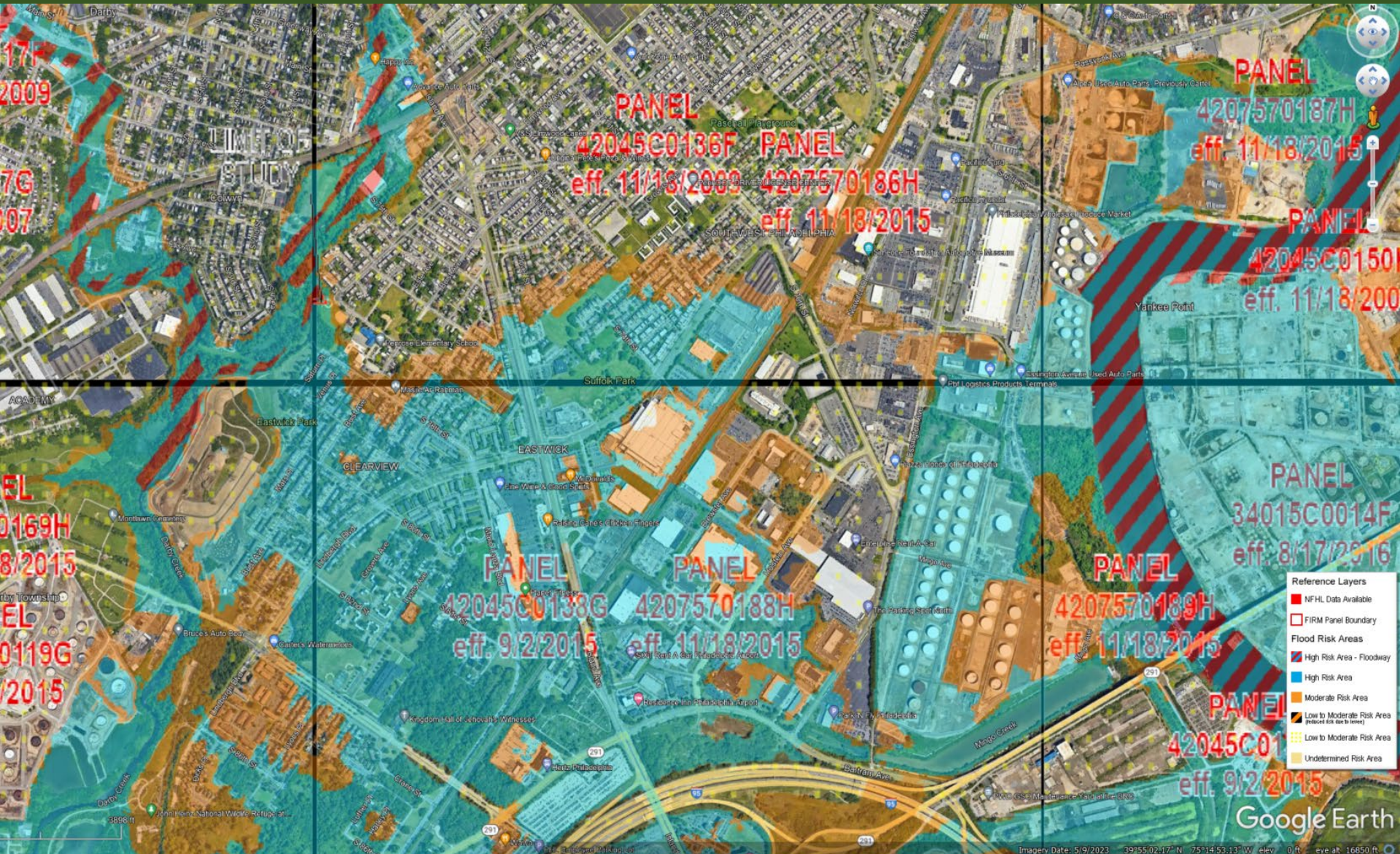
Impervious Surface

 1985

 2001

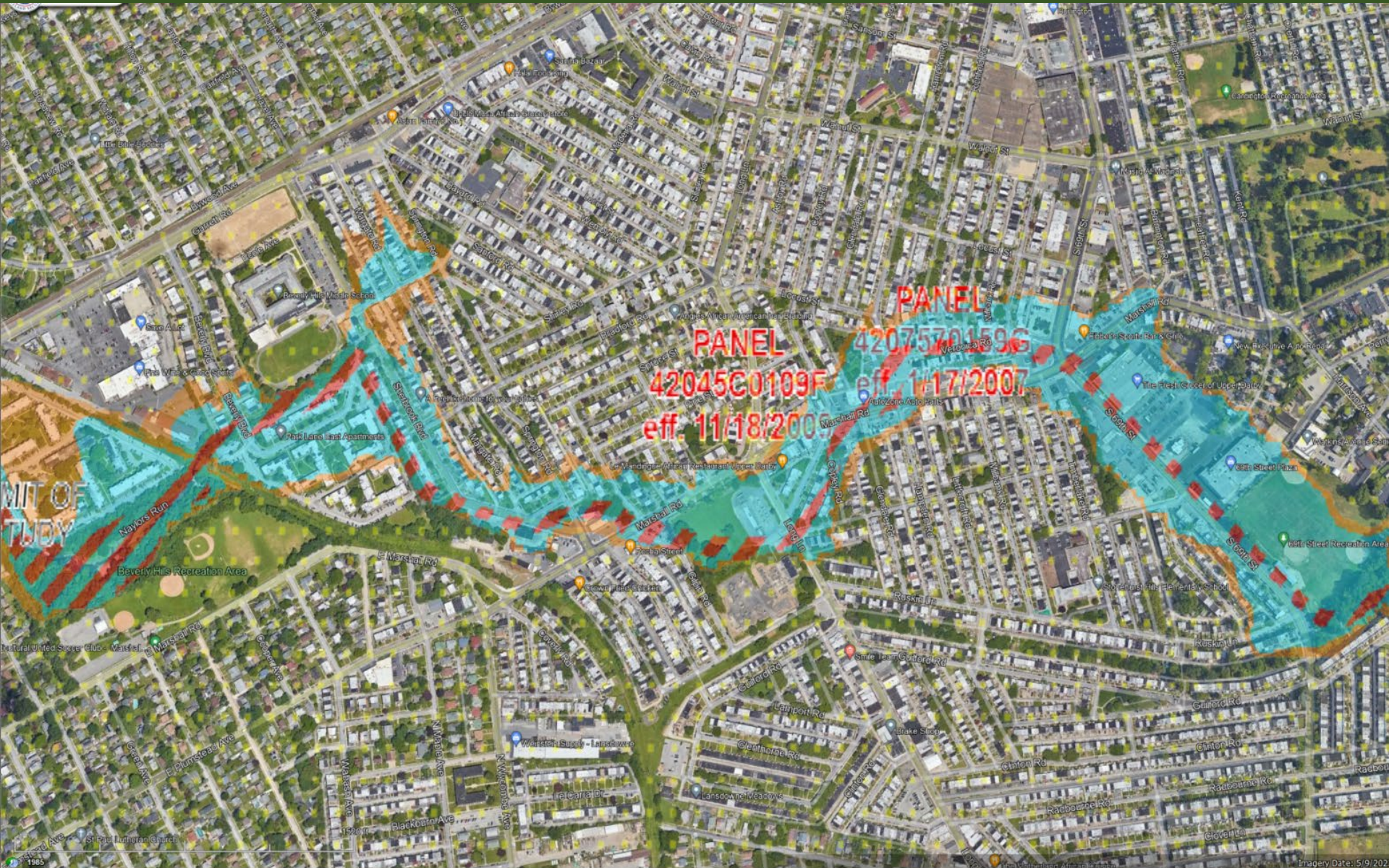
 2019

6. Climate Change: 1600+ Buildings in Floodplains



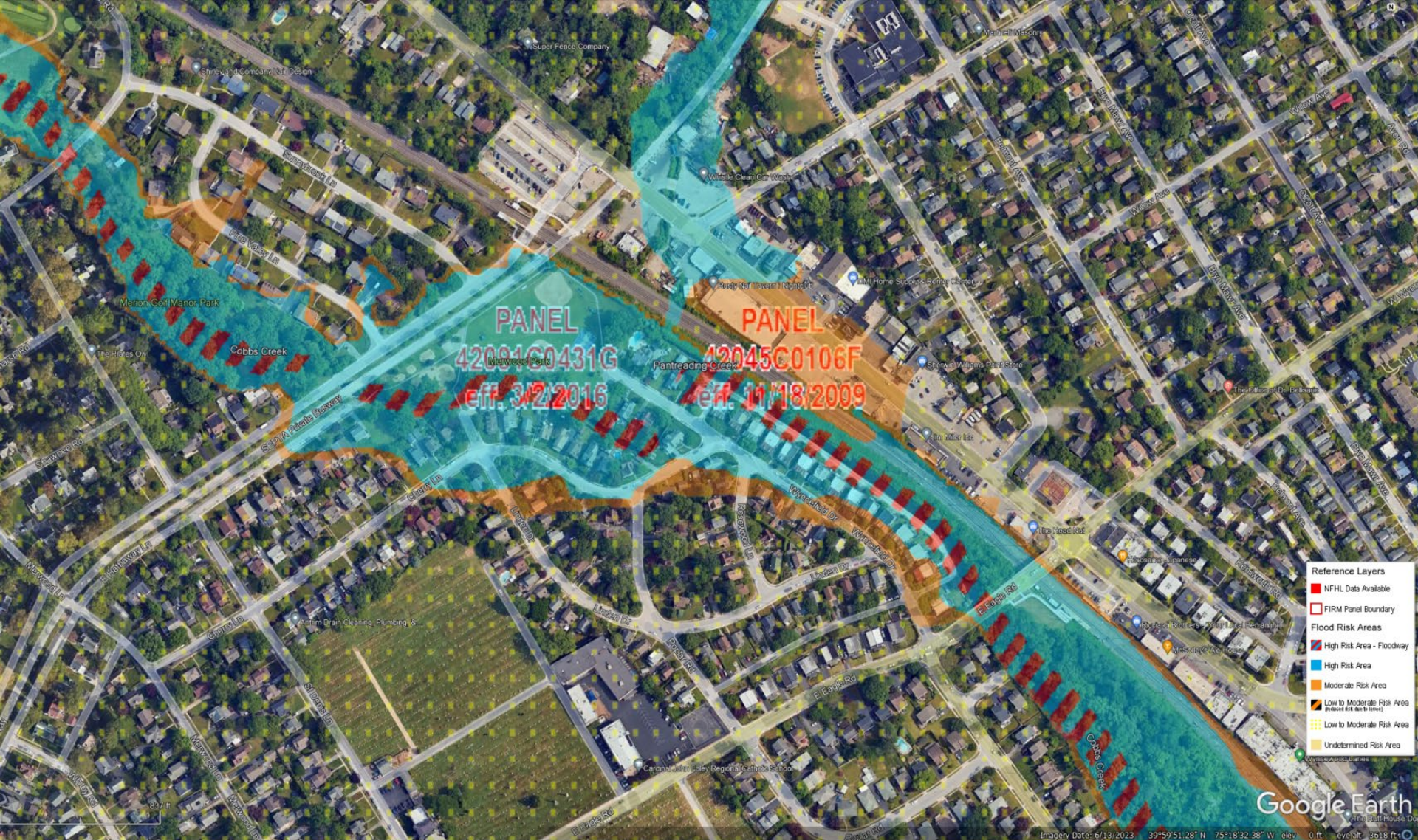
Darby Creek & Schuylkill River – Philadelphia

6. Climate Change: 1600+ Buildings in Floodplains



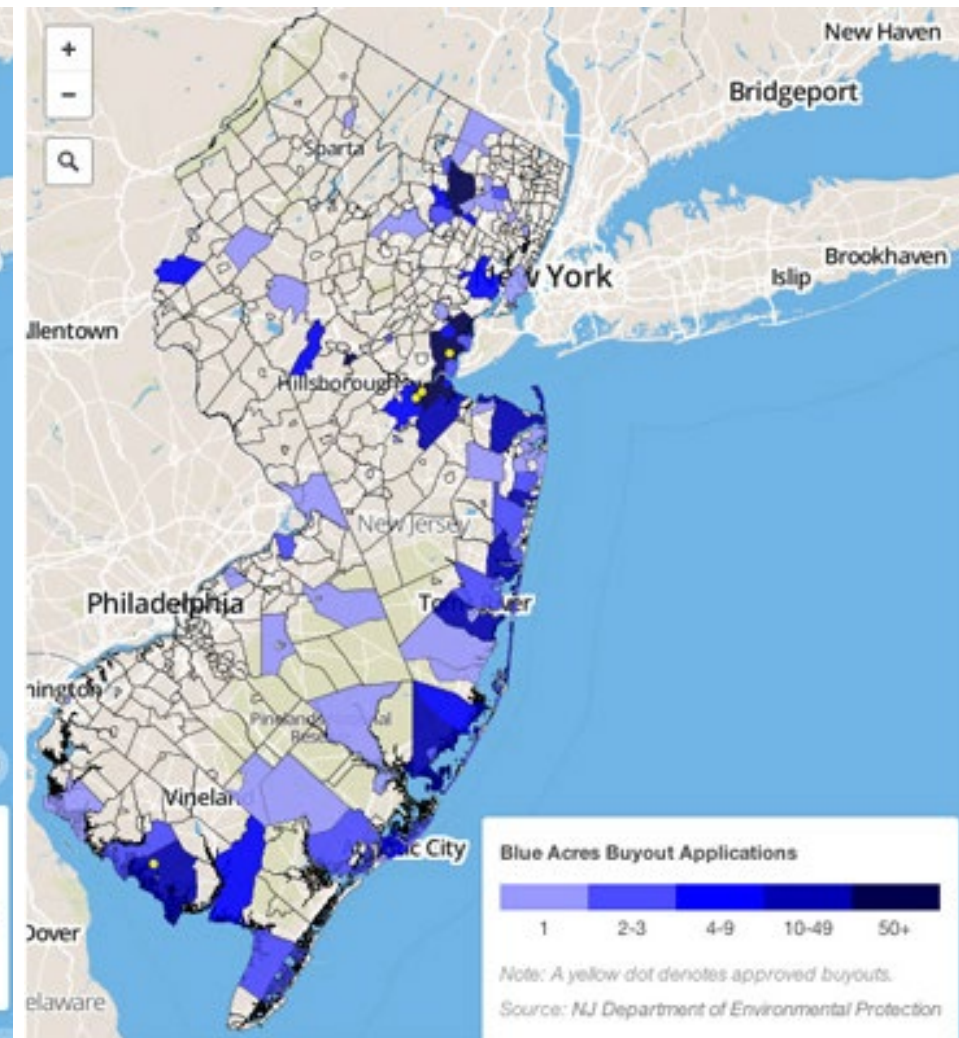
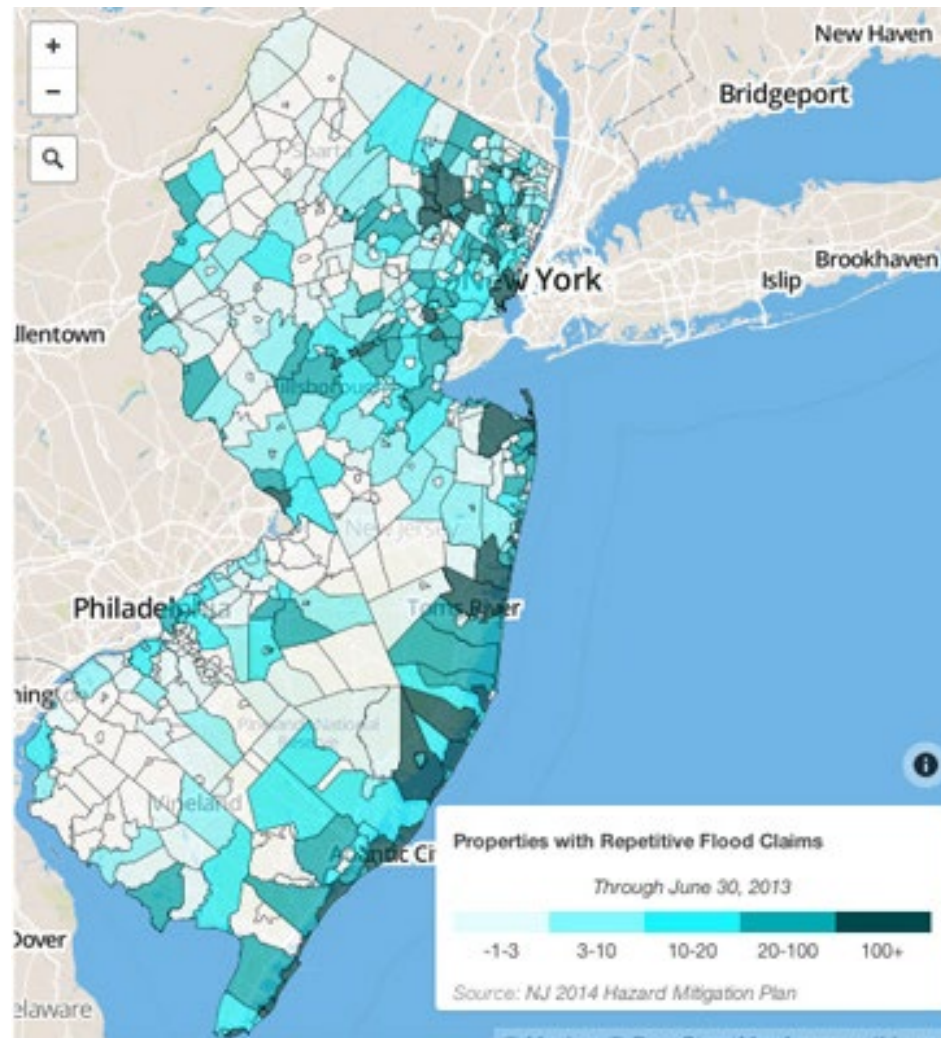
Naylor's Run– Upper Darby Township

6. Climate Change: 1600+ Buildings in Floodplains



Cobbs Creek – Haverford Township

6. Climate Change: NJDEP's Blue Acres Program



6. Climate Change: FEMA's Community Ratings System

FEATURED



Community Rating System Overview and Participation

The Community Rating System has 1,520 communities throughout the United States that participate in the program by implementing local mitigation, floodplain management, and outreach activities that exceed the minimum NFIP requirements.

[View the Fact Sheet](#)

Community Rating System

The NFIP's Community Rating System (CRS) provides discounts on flood insurance premiums in those communities that establish floodplain management programs that go beyond NFIP minimum requirements. Communities can receive credit for more restrictive regulations, acquiring flood-prone property, and other measures that reduce flood damages and protect floodplains. Over 1,000 communities now participate in the CRS and are taking action to reduce their vulnerability to flooding.

[Learn More about the Community Rating System](#)

6. Climate Change: Precedent Programs?



This unprecedented effort restores access to almost 180 miles of blocked habitat throughout six major salmon and steelhead rivers of Oregon's North Coast. Using a strategic, scaled approach to maximize benefits and minimize costs, a unique, community partnership will deliver a portfolio of 93 projects. As of January 2024, we're over half way home with 129 miles reconnected. Each year the Salmon SuperHwy reconnects more historic habitat, reduces chronic flooding, improves recreation opportunities and stimulates the local economy.

PARTNERS

TILLAMOOK COUNTY • TILLAMOOK ESTUARIES PARTNERSHIP • TILLAMOOK COUNTY CREAMERY ASSOCIATION
NESTUCCA-NEKOWIN SAND LAKE WATERSHEDS COUNCIL • PELICAN BREWING

OR DEPT OF FISH AND WILDLIFE • OR DEPT OF FORESTRY • OR DEPT OF TRANSPORTATION
OR WATERSHED ENHANCEMENT BOARD • OR FISH PASSAGE TASK FORCE

US FISH & WILDLIFE SERVICE • US FOREST SERVICE
BUREAU OF LAND MANAGEMENT • NATURAL RESOURCES CONSERVATION SERVICE

TROUT UNLIMITED

SPECIAL THANKS TO THE MEYER MEMORIAL TRUST

6. Climate Change: Programs - Home Waterproofing

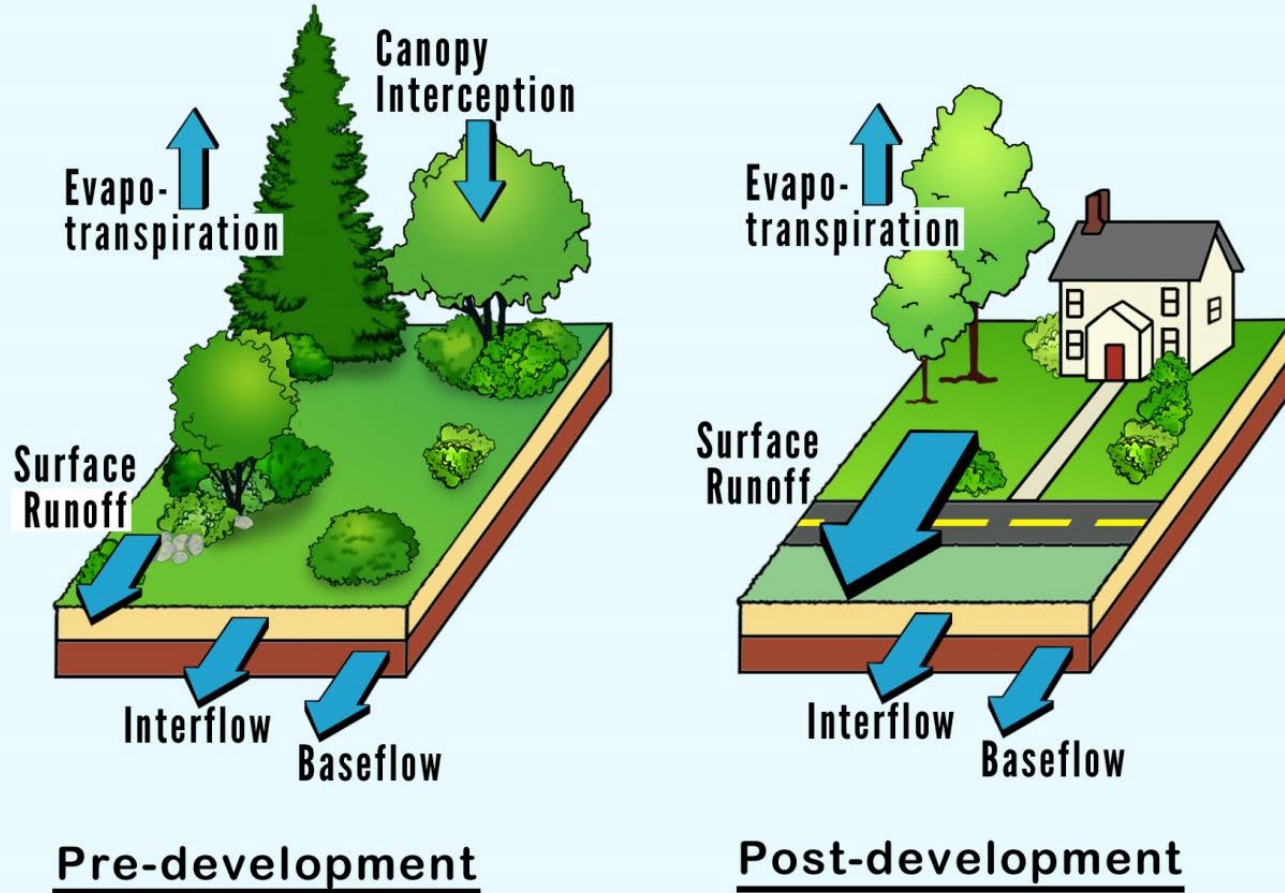


Opportunities for Homeowners: Daylighting



Opportunities for Homeowners: Lawn Reduction

Figure 1.1 Water Balance at a Developed and Underdeveloped Site
(Source: Schueler, 1987)

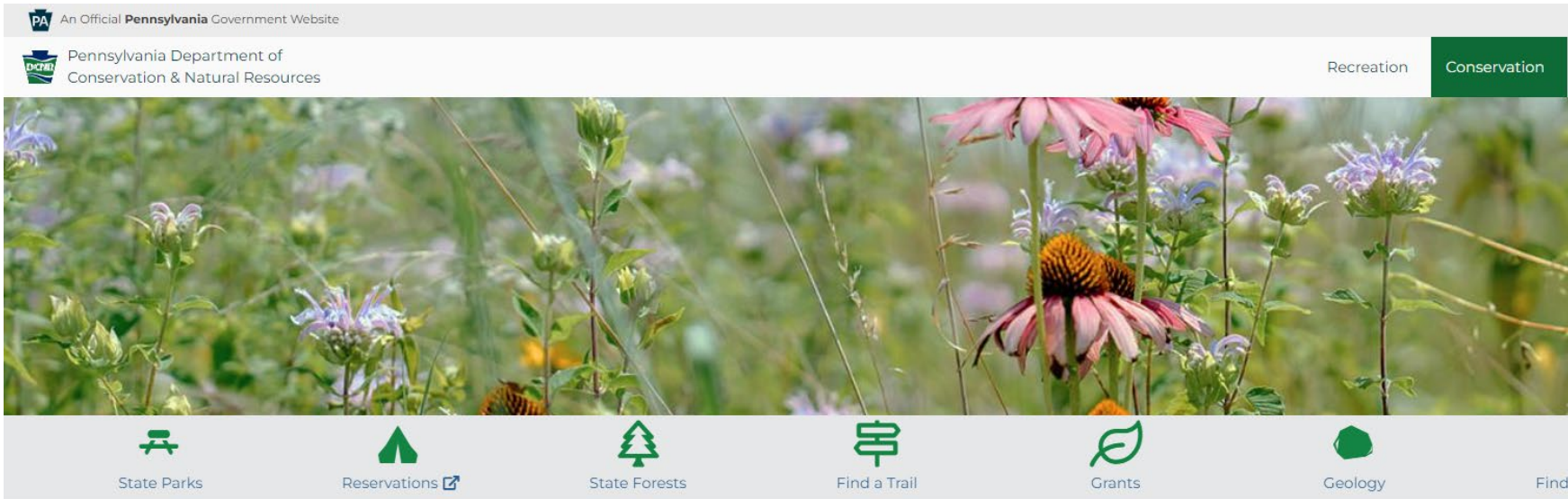


Surface runoff is minimal in an undeveloped site, but dominates the water balance at a highly impervious site.

Opportunities for Homeowners: Lawn Reduction



Tools: DCNR's Lawn Conversion Calculator



[DCNR](#) > [Conservation](#) > [Water](#) > Lawn Conversion

Lawn Conversion

In Pennsylvania, there are two million acres of lawn.

Maintaining a lawn takes work. Grass needs to be treated with fertilizer because the soil is not right (not to mention how those fertilizers run off into streams when it rains).

Turf wants water when the weather doesn't provide it. Mowing requires time and takes energy; and pollinators disappear because they no longer have food to eat.

Share Your Backyard with Nature

One way to reduce your environmental footprint, help provide clean water, and welcome birds and beneficial insects is to let go of all that grass!

Converting some or all of your lawn to woods or meadow:

- Shows you are a good steward of the land

Additional Information

[Mowing Savings Calculator \(XLSM\)](#)

[Bring Biodiversity Back to Your Lawn Blog Post](#)

[Introduction to Insects \(PDF\)](#)

[Penn State Extension Meadows and Prairies: Wildlife Friendly Alternatives for Lawn](#)

[Penn State Wildland Weed Management](#)

[Xerces Society Establishing Pollinator Meadows from Seed](#)

[DCNR Watershed Specialist Regions Map \(PDF\)](#)

Stay

Tools: DCNR's Lawn Conversion Calculator

AutoSave Off PA_DCNr_Mowing_Calculator_v1 (3) - Protected View

File Home Insert Page Layout Formulas Data Review View Automate Developer Help Acrobat

PROTECTED VIEW Be careful—files from the Internet can contain viruses. Unless you need to edit, it's safer to stay in Protected View. Enable Editing

148

1 2 3 4 5 6 7 8 9 10 11 12 13 14 15 16 17 18 19 20 21 22 23 24 25 26 27 28 29 30 31 32 33 34 35 36 37 38 39 40 41 42 43 44 45 46 47 48 49 50 51 52 53 54 55

pennsylvania
DEPARTMENT OF CONSERVATION
AND NATURAL RESOURCES

Save File Use these buttons at any point to save the calculator to your computer.
Save As

Welcome to Pennsylvania's Mowing Calculator!

Best practices for managing mowed areas.

This calculator has been created for public and private land owners who regularly care for lawns. This tool calculates fuel, dollar, greenhouse gas (GHG), and other savings associated with changing current mowing practices.

Establishing a new approach for managing a lawn can lead to:

- A healthier and more attractive lawn,
- Improved air and water quality,
- Money and time that will be available for other maintenance needs.

This calculator presents best practices pertaining to Native Vegetation, Grass Cycling, Mower Maintenance, and Mowing. To access information on these topics click the buttons below. To access the calculator click the orange arrow above.

[Click here to Get Started](#)

Please note: Before you begin, you should save the Mowing Calculator file to your computer and enable macros. Macros are programming rules that run Mowing Calculator features. Depending on your computer's security settings they may be disabled. Macros in this file will not harm your computer.

[Click here to learn more...](#)

Have questions? Contact:
Ashley Rebert
Department of Conservation and Natural Resources
Bureau of Recreation and Conservation
arebert@pa.gov
<https://www.dcnr.pa.gov/about/Pages/Recreation-and-Conservation.aspx>

Native Vegetation Grasscycling Mower Maintenance Mowing Practices

Prepared for PA DCNR and PRPS by:
ICF
INTERNATIONAL
V.1.0

Ready | Display Settings | 100%

Welcome | Macros | Mowing Scenario | Calculations | Factors | Results | Scenarios | Scenarios (2) | Native Vegetation | Grasscycling | Maintenance | Mowing | Native Vegetation (2) | Gr: ...

Tools: DCNR's Lawn Conversion Calculator

Compare current and future practices

Back

See the Results

Save File

Save As

Summary Results

	Mowed Area	Mowing Hours	Fuel Use	Fuel Costs
Current Practices	2.0 acres	27 hours	40 GGE*	\$ 146
Future Practices	- acres	- hours	- GGE*	\$ -
Savings	- acres	- hours	- GGE*	\$ -

Current Mowing Practices

You must enter the acres mowed in the yellow cell below. All other inputs are optional. Default data are provided where possible.

General Information

How large is the area that you mow? acres

How frequently do you mow the lawn? Once every... days

How many weeks long is the mowing season? weeks

How many mowers do you have? One mower Several mowers

Click to restore default data and settings.

Single Mower Information

How large is the mower's deck? inches

What's the mower's horsepower (hp)? hp

What type of fuel does the mower use?

What's the average fuel cost? \$/gallon
Don't know? Here's the average. \$/gallon

How fast do you go when you're mowing the lawn? mph

Irrigation Information (Optional)

What percent of the lawn is irrigated routinely? % acres
If none, leave blank.

How often do you irrigate? times per season
[Learn more](#)

How much water do you use? inch(es) per irrigation cycle
Don't know? Here's the average. inch per irrigation cycle

Tools: DCNR's Lawn Conversion Calculator

Compare current and future practices

Back

See the Results

Save File

Save As

Summary Results

	Mowed Area	Mowing Hours	Fuel Use	Fuel Costs
Current Practices	1.5 acres	14 hours	21 GGE*	\$ 77
Future Practices	- acres	- hours	- GGE*	\$ -
Savings	- acres	- hours	- GGE*	\$ -

Current Mowing Practices

You must enter the acres mowed in the yellow cell below. All other inputs are optional. Default data are provided where possible.

General Information

How large is the area that you mow? acres

How frequently do you mow the lawn? Once every... days

How many weeks long is the mowing season? weeks

How many mowers do you have? One mower Several mowers

Click to restore default data and settings.

Single Mower Information

How large is the mower's deck? inches

What's the mower's horsepower (hp)? hp

What type of fuel does the mower use?

What's the average fuel cost? \$/gallon
Don't know? Here's the average. \$/gallon

How fast do you go when you're mowing the lawn? mph

Irrigation Information (Optional)

What percent of the lawn is irrigated routinely? % acres
If none, leave blank.

How often do you irrigate? times per season
[Learn more](#)

How much water do you use? inch(es) per irrigation cycle
Don't know? Here's the average. inch per irrigation cycle

Tools: DCNR's Lawn Conversion Calculator

Results

The results of your analysis are presented below.

Print Page

Back

See the calculations

Save File

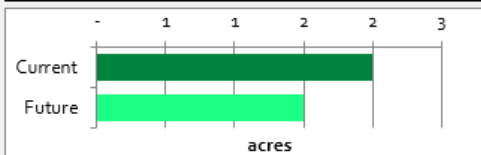
Save As

The tables and charts below summarize the results of your calculations for current and future mowing practices.

Mowed Area

Current	2.0 acres
Future	1.5 acres

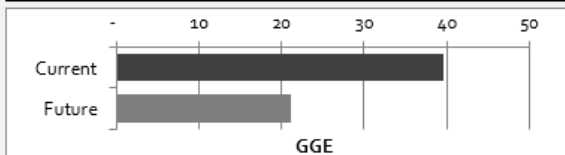
Reduced 0.50 acres



Seasonal Fuel Use

Current	40 GGE*	\$ 146 dollars
Future	21 GGE	\$ 78 dollars

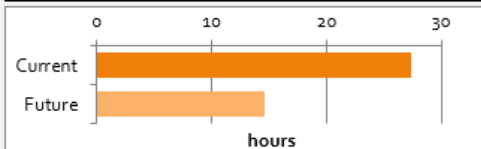
Savings 18 GGE \$ 68 dollars



Seasonal Mowing Hours

Current	27 hours
Future	15 hours

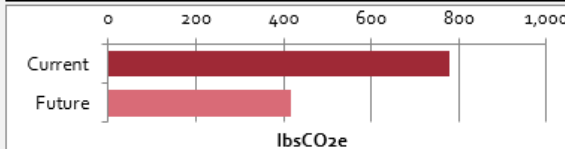
Savings 13 hours



Seasonal Greenhouse Gas Emissions

Current	779 lbsCO ₂ e**
Future	416 lbsCO ₂ e

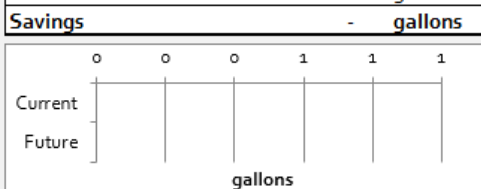
Savings 362 lbsCO₂e



Seasonal Water Use

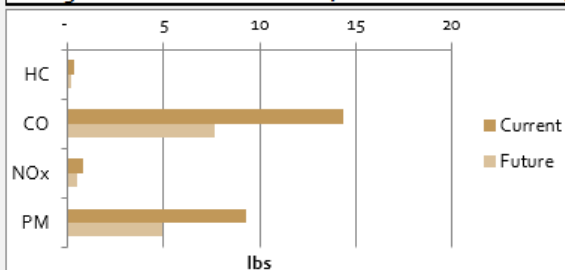
Current	- gallons
Future	- gallons

Savings - gallons

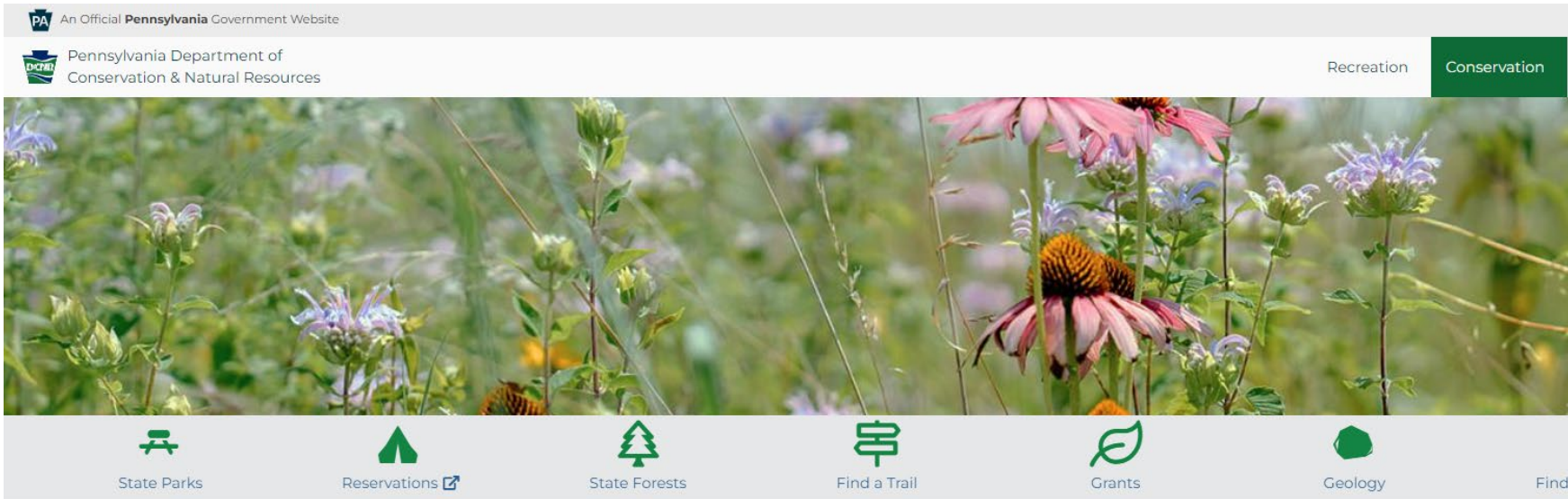


Seasonal Air Pollutant Emissions (lbs)

	Hydrocarbons (HC)	Carbon Monoxide (CO)	Oxides of Nitrogen (NOx)	Particulate Matter (PM)
Current	0	14	1	9
Future	0	8	0	5
Savings	0	7	0	4



Tools: DCNR's Lawn Conversion Calculator



[DCNR](#) > [Conservation](#) > [Water](#) > Lawn Conversion

Lawn Conversion

In Pennsylvania, there are two million acres of lawn.

Maintaining a lawn takes work. Grass needs to be treated with fertilizer because the soil is not right (not to mention how those fertilizers run off into streams when it rains).

Turf wants water when the weather doesn't provide it. Mowing requires time and takes energy; and pollinators disappear because they no longer have food to eat.

Share Your Backyard with Nature

One way to reduce your environmental footprint, help provide clean water, and welcome birds and beneficial insects is to let go of all that grass!

Converting some or all of your lawn to woods or meadow:

- Shows you are a good steward of the land

Additional Information

[Mowing Savings Calculator \(XLSM\)](#)

[Bring Biodiversity Back to Your Lawn Blog Post](#)

[Introduction to Insects \(PDF\)](#)

[Penn State Extension Meadows and Prairies: Wildlife Friendly Alternatives for Lawn](#)

[Penn State Wildland Weed Management](#)

[Xerces Society Establishing Pollinator Meadows from Seed](#)

[DCNR Watershed Specialist Regions Map \(PDF\)](#)

Stay

Opportunities: Complement Lawn Reduction



Next Steps



Keep gathering information:

- Ordinance Reviews
- Map Studies
- Site visits & meetings

Begin public process:

- Public meetings
- Key Person Interviews
- Focus Groups



End Products

Written Report

Toolkit Pieces

DARBY CREEK WATERSHED CONSERVATION PLAN

EXECUTIVE SUMMARY



DARBY CREEK VALLEY ASSOCIATION
©2005



Preserve Goal
Advance the protection and stewardship of open space, farmland, and natural and cultural features to realize economic, ecological, and quality of life benefits.

[Learn More](#)



Protect Goal
Protect and restore critical natural resources to ensure a resilient environment that supports healthy communities.

[Learn More](#)



Appreciate Goal
Preserve the historic resources and landscapes that define our cultural heritage to inspire the future through tangible connections to our shared past.

[Learn More](#)

Open Space Preservation Inventory and Opportunities

2022

Inventory
32% OF THE TOWNSHIP
Preserved Open Space

Public Parks: 8,654
Total Acres: 3,048 Acres in Township
Ag conservation easements: 2,276 acres
Other: 468 acres

Now more important than ever... Preserving farmlands, natural areas, and cultural resources is fundamental to protecting Chester County's quality of life, enhancing its economy, and maintaining the character residents and visitors so highly value. Permanently preserved lands limit development pressure on critical resources, promote physical activity, and often provide public access to connect to nature. With the heightened use and value placed on outdoor recreation since the pandemic, increased demand for housing, and mounting pressures on farmland, preserving land is now more important than ever.

Opportunities

Preserved open space: 3,048 acres
Other: 468 acres

Woodslands: 1,379 acres
Agricultural lands: 1,666 acres

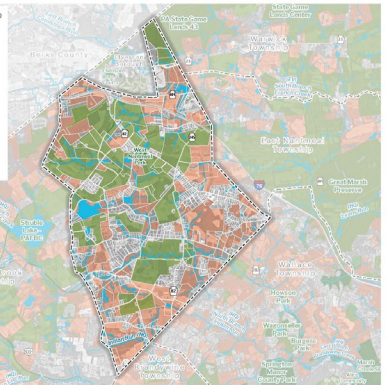
40% OF THE TOWNSHIP
Suitable for Future Preservation
126 parcels over 100 acres totaling 3,475 acres remain in areas of the township suitable for planned growth areas, indicating significant potential preservation opportunities.

West Nantmeal Township

Preserved open space
Public
Ag conservation easement
Other

Opportunities
Suitable for future preservation
Water

Details online
Preserved Open Space Map
Inventory and Opportunities
Chester County Real Estate Map
Interactive Data



How to Move Forward

Recommended Open Space Preservation Tools

- Standard opportunities for open space preservation exist within West Nantmeal Township. Assets like parks, agricultural lands, woodlands, and the biodiversity of high quality and recreational value streams could be targeted for preservation. We encourage landowners to explore preservation options to land preservation by utilizing the Open Space Inventory and Opportunities Map, including an Official Map 700 designation, and considering the legislative authority of the open space tool through available land uses.
- Agricultural Security Area (ASA)
Productive farmland with additional protections for farming operations. A farm within an ASA is eligible for an agricultural conservation easement.
- Agricultural Zoning (OZ60001)
A zoning tool that supports the continuation of farming and the agricultural industry.
- Conservation Subdivisible Ordinance (SO60001)
A subdivision ordinance requiring 50 percent preservation open space.
- Official Map (O60001)
A map and ordinance designating planned future improvements, including parks, trails, and open space.
- Parks, Recreation and Open Space Plan (RO60001)
A plan to improve development and management of parks and open space systems, including trail development and programming. This plan should be revised within a 10-year time frame.
- Open Space Tax (SO60001)
A financial incentive to support a fund for open space preservation.
- Transfer of Development Rights (TDR)
A zoning tool that protects special-use conservation values by transferring development to areas planned to accommodate growth.

Ask for Help

- Many preservation-oriented organizations are active in Chester County and have resources to offer your neighbors. Consider contacting your local water utility partner for assistance with:
 - Stream design and planning
 - Landscaping and revegetation design
 - Land acquisition
 - Ordinance writing
 - Green stormwater infrastructure planning
 - Conservation easements
 - Conservation and open space education

Partners in your Area



Prepared by the Chester County Planning Commission on behalf of the Chester County Conservation Partners. checonsp.org/open-space

Your Homework- help inform the plan!!!



Rick Tralies, PLA
rtralies@natlands.org

QUESTIONS?

thank you.

